

FrameSaver® FusionFrame®

Product Release Date: August 2019

Product Summary

Builders and homeowners increasingly seek prefinished and maintenance-free products within their door units. Composite door frames require "special" installation, are unable to stand up to heat, have limited product offerings and only partially meet the needs of the market. UNTIL NOW.

Reset your expectations when it comes to the performance and quality of maintenance-free door frames with the release of FrameSaver® FusionFrame®. A one-of-a-kind solution, FusionFrame provides the benefits of both all-wood and all-composite exterior frames to exceed the performance of other maintenance-free products. FusionFrame combines Endura's proven FrameSaver composite technology, a rigid engineered core and a unique laminated composite "skin" to provide unparalleled stability. FusionFrame overcomes the shortcomings of existing composite frames and exceeds what you thought was possible within an exterior frame system.

Key Features and Benefits

Why FusionFrame? FusionFrame provides features and benefits no composite frame can match. Providing unparalleled stability, product versatility and integrated installation features, FusionFrame is a truly prefinished, maintenance-free door installation system.

- **Structural Integrity:** FusionFrame combines a rigid engineered core fingerjointed to a composite bottom, with a composite exterior. The result: FusionFrame is the only composite frame system that has the strength to install like a standard wood frame system and remain straight with minimal shimming required. Furthermore, while other composite systems bend and bow in heat and temperature changes, FusionFrame stands strong and straight.
- **Product Versatility:** Forget width and profile limitations - with two unique "rippable" frame widths, FusionFrame can be utilized for jamb depths ranging from 4-9/16" – 8-9/16" without any special repair, gluing or sanding. In addition, FusionFrame offers a variety of brickmould options, one-piece mull designs, spread mull capabilities, transom sill solutions and other designs to give you profile interchangeability within one product to fit every application.
- **Integrated Installation Features:** With removable jamb stop and brickmould covers, FusionFrame delivers a blemish-free installation of both the jambs and the brickmould. FusionFrame also features depth-adjustable brickmould and a built-in bubble level to help overcome common challenges and deliver a better installation.



FrameSaver® FusionFrame®

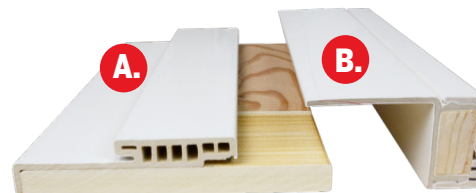
Product Release Date: August 2019

Structural Integrity:

- **Rigid FrameSaver Core:** Jambs, mulls and brickmould stand strong against bending and bowing, regardless of temperature or installation conditions.
- **Maintenance-Free:** As part of the FrameSaver product line, FusionFrame features a maintenance-free composite bottom that won't wick or rot, wrapped in a composite skin for lasting, worry-free performance.
- **Supports Sidelite & Hinged Patio Applications:** With a rigid engineered core, FusionFrame mulls stand strong and eliminate concerns with thermal bow.
- **Supports Storm Door Installations:** FusionFrame jambs and brickmould deliver needed rigidity to support storm door installations, even when the temperature rises.



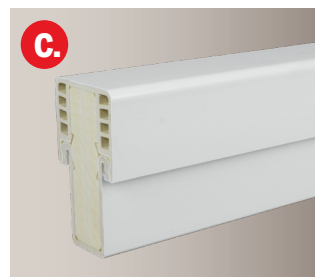
Rigid FrameSaver Core +
Composite Bottom



Obtain any jamb width between 4-9/16" and 8-9/16" with two rippable jamb options: 4-9/16" - 6-9/16" jamb (shown above) and 6-9/16" - 8-9/16" jamb

Product Versatility:

- A. Rippable Jamb Widths:** In addition to 4-9/16" and 6-9/16" dedicated jamb options, FusionFrame is also available in two rippable jamb widths, collectively delivering unlimited jamb-depth adjustability between 4-9/16" and 8-9/16" without compromising the finish:
- 4-9/16" +2" Rippable: Can be ripped to any width between 4-9/16" and 6-9/16"
 - 6-9/16" +2" Rippable: Can be ripped to any width between 6-9/16" and 8-9/16"
- B. Unique, Rippable Brickmould Option:** Can be cut to perfectly fit the jamb and cover exposed edges for a flawless, seamless finish.
- C. Full Portfolio of Mull Profiles:** One-Piece Standard, One-Piece Fat Boy, Back-to-Back and Spread Mull options and capabilities available.
- D. Finishing Freedom:** Available with a prefinished, paintable smooth white or textured stainable finish, delivering the convenience of a field-ready product.



4-3/8" Fat Boy Mull



Smooth White
Finish

Textured
Stainable
Finish

UNFINISHED

STAINED

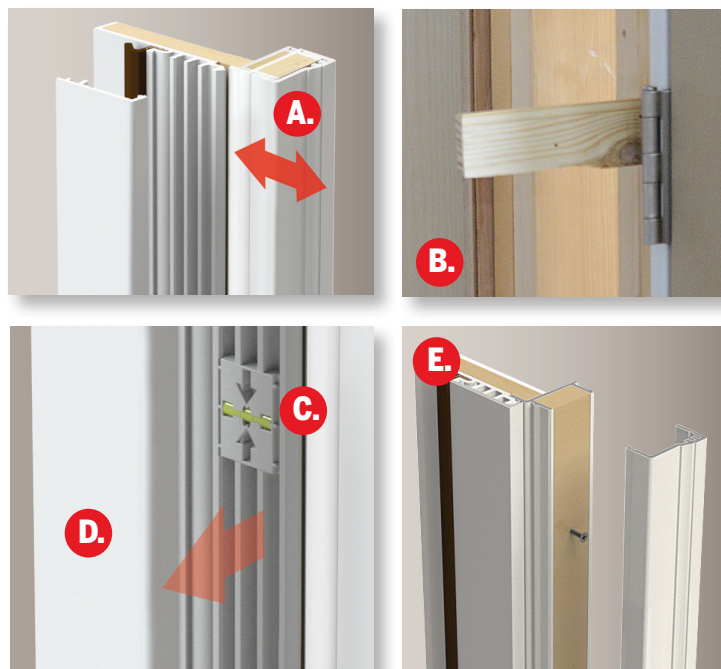
For full product offering and capability information, refer to page 4.

FrameSaver® FusionFrame®

Product Release Date: August 2019

Integrated Installation Features:

- A. Adjustable Brickmould** - With 1/4" of inside-to-outside "float", FusionFrame's innovative brickmould design can be adjusted to fit flush against the house, despite rough opening conditions, while keeping the door frame plumb.
- B. Fewer Shims Required** - Sturdy engineered core delivers a strong no-nonsense installation requiring minimal shims.
- C. Built-in Bubble Level** - Built-in bubble level helps get installation off to a level start.
- D. Mar-Free Install** - Removable Jamb Stop Cover conceals installation fasteners, for a flawless finish.
- E. Blemish-Free Brickmould** - Each brickmould option allows for concealed installation fasteners, eliminating fasteners being driven directly into the face of the brickmould.



Heat Testing:

In side-by-side heat testing, FusionFrame tested up to 200 degrees Fahrenheit without experiencing any bow or deformation affecting functionality of the door system. In comparison, the leading competitor composite frame began deflecting at the start of the test, with temperatures merely reaching 110-120 degrees Fahrenheit.



Other composite frame systems suffer from structural issues during and after installation. FusionFrame is the only composite frame system that behaves with the strength of a standard wood frame system and remains straight in all weather conditions.

FrameSaver® FusionFrame®

Product Release Date: August 2019

Certified Testing:

20-Minute Fire-Rating: FusionFrame is 20-minute fire rated for positive pressure to UL 10C and NFPA 252, and neutral pressure with hose stream to UL 10B, NFPA 252 and CAN/ULC S104. Rated frame sizes include single doors up to 3080 and pair doors up to 6080.

Florida Product Approval: FusionFrame is approved for use in Florida, including HVHZ areas, under FL 25610.7/.8/.11/.12. Additional approvals are pending.

TDI Product Evaluation: In progress.

NAMI Waiver of Retest Equivalency: Issued, with FusionFrame acceptable for use as a substitute in air, water, and structurally certified tested door systems.

Product Offering and Pricing:

FusionFrame is available for purchase in a variety of jamb, mull and brickmould sizes and options to meet your specific needs. FusionFrame is also available in a simplified one-piece design, which does not include the removable jamb stop covers and bubble levels and is **standard for all headers**. Full offering and capabilities are outlined on the following pages.

FRAMESAVER FUSIONFRAME PRODUCT OFFERING AVAILABLE IN 6/8 AND 8/0 LENGTHS							
Jambs	Dedicated Jambs				Width-Adjustable (Rippable) Jambs		
	4-9/16"		6-9/16"		4-9/16" +2" Rippable	6-9/16" +2" Rippable	
1-Piece Jamb	●		●		●		●
2-Piece Jamb with Removable Jamb Stop Cover and Bubble Levels	●		●		●		●
Transom Sills (2-Piece Jambs Only)	○				○		
Mulls	3-9/16"	4-3/8"	4-9/16"	5-5/8" Storm Door Ready	6-9/16"	7-5/8" Storm Door Ready	8-5/8" Storm Door Ready
Standard Mull (1" x 2")	●	●					
Fat Boy Mull (1-1/2" x 2-1/2")		●					
Back-to-Back Mull			○	○	○	○	○
Spread Mulls Ranging From 1" to 4-1/4" Spread			○		○		
Exterior Trim	1-Piece WM180 with J-Channel		2-Piece WM180 with Removable Cover		2-Piece Flat Casing with Removable Cover		2-Piece Flat Casing with J-Channel & Removable Cover
Dedicated	●		●		●		▨
Rippable			●		●		▨

● Available ▨ Available Fall 2019 ○ Product Available via Utilization of FusionFrame Accessories

FrameSaver® FusionFrame®

Product Release Date: August 2019

JAMB OPTIONS

All FusionFrame jambs are offered in textured stainable and prefinished, smooth white delivering the convenience of a field-ready product or the freedom to finish however you please to meet your needs.

1-Piece Jambs



DEDICATED 4-9/16" 1-PIECE JAMB
SHOWN IN TEXTURED STAINABLE



DEDICATED 6-9/16" 1-PIECE JAMB
SHOWN IN SMOOTH WHITE



4-9/16" + 2" 1-PIECE RIPPABLE JAMB
SHOWN IN TEXTURED STAINABLE



6-9/16" + 2" 1-PIECE RIPPABLE JAMB
SHOWN IN SMOOTH WHITE

1-Piece jambs are available in the following widths:

- 4-9/16"
- 6-9/16"
- 4-9/16" + 2" (rippable)
- 6-9/16" + 2" (rippable)

2-Piece Jambs



DEDICATED 4-9/16" 2-PIECE JAMB
SHOWN IN SMOOTH WHITE



DEDICATED 6-9/16" 2-PIECE JAMB
SHOWN IN TEXTURED STAINABLE



4-9/16" + 2" 2-PIECE RIPPABLE
JAMB SHOWN IN SMOOTH WHITE



6-9/16" + 2" 2-PIECE RIPPABLE JAMB
SHOWN IN TEXTURED STAINABLE

2-Piece jambs are available in the following widths:

- 4-9/16"
- 6-9/16"
- 4-9/16" + 2" (rippable)
- 6-9/16" + 2" (rippable)

Transom Sills



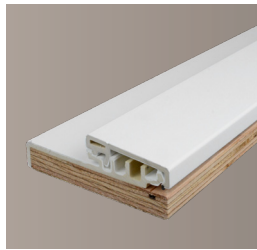
DEDICATED 4-9/16" 2-PIECE JAMB
SHOWN IN SMOOTH WHITE

+



TRANSCOM COVER
SHOWN IN SMOOTH WHITE*

=



TRANSCOM COVER + 2-PIECE JAMB



Transom covers are available for 4-9/16" + 2" or 6-9/16" + 2" Jambs. Transom sills can be created by replacing the original jamb stop cover with this transom cover.

*Textured Stainable Available Fall 2019

FrameSaver® FusionFrame®

Product Release Date: August 2019

BRICKMOULD & TRIM OPTIONS

All FusionFrame brickmould options are offered in textured stainable and prefinished, smooth white delivering the convenience of a field-ready product or the freedom to finish however you please to meet your needs.

1 & 2-Piece Brickmould



1-PIECE BRICKMOULD WITH J-CHANNEL 9/16" RETURN LEG SHOWN IN SMOOTH WHITE

Features:

- 2" Adjustable hollow brickmould with J-channel
- 9/16" return leg



2-PIECE BRICKMOULD 9/16" RETURN, WOOD CORE SHOWN IN SMOOTH WHITE

Features:

- 2" Adjustable 2-piece brickmould
- 9/16" Return leg
- Wood core
- Storm door ready



2-PIECE BRICKMOULD, 2-9/16" RETURN, WOOD CORE SHOWN IN SMOOTH WHITE

Features:

- 2" Adjustable 2-piece brickmould
- Rippable 2-9/16" return leg
- Wood core
- Storm door ready
- For use with rippable jambs

Flat Casing



FLAT CASING, WOOD CORE SHOWN IN SMOOTH WHITE*

Features:

- Adjustable Flat Casing
- 3-1/2" x 1-1/16"
- 9/16" Return leg
- Storm door ready
- Wood core



FLAT CASING WITH J-CHANNEL, WOOD CORE SHOWN IN SMOOTH WHITE

Features:

- Adjustable Flat Casing with J-Channel
- 3-1/2" x 1-1/16"
- 9/16" Return leg
- Storm door ready
- Wood core



FLAT CASING WITH 2-9/16" RETURN LEG, WOOD CORE SHOWN IN SMOOTH WHITE

Features:

- Adjustable Flat Casing
- 3-1/2" x 1-1/16"
- Rippable 2-9/16" return leg
- Storm door ready
- Wood core



FLAT CASING WITH J-CHANNEL, 2-9/16" RETURN LEG, WOOD CORE SHOWN IN SMOOTH WHITE

Features:

- Adjustable Flat Casing with J-Channel
- 3-1/2" x 1-1/16"
- Rippable 2-9/16" return leg
- Storm door ready
- Wood core

*Textured Stainable Available Fall 2019

FrameSaver® FusionFrame®

Product Release Date: August 2019

MULLION OPTIONS & CAPABILITIES

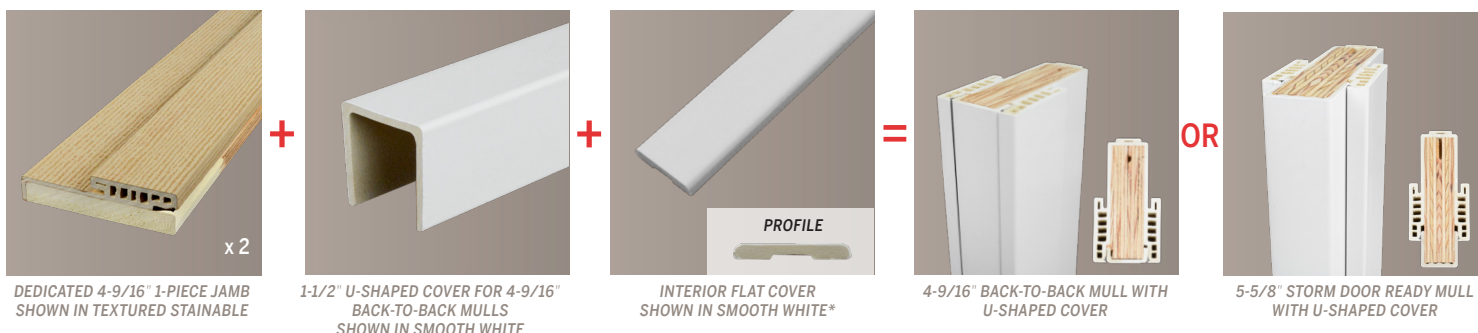
All FusionFrame mullions and accessories are offered in textured stainable and prefinished, smooth white delivering the convenience of a field-ready product or the freedom to finish however you please to meet your needs. All mullions feature a rigid FrameSaver core for ultimate strength and stability.

Standard/One-Piece Mulls



Back-to-Back & Storm Door Ready Mull Capabilities

1-1/2" U-Shaped Cover is designed to create a back-to-back mull (4-9/16" or 6-9/16") or a storm door ready mull (5-5/8" or 7-5/8").

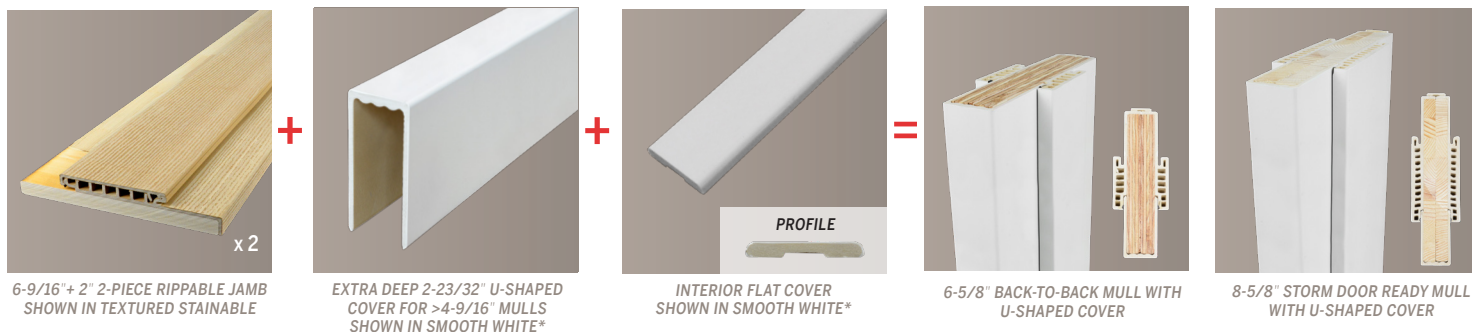


1-1/2" x 1-9/16" U-Shaped Cover for:

- 4-9/16" & 6-9/16" Back-to-Back Mulls
- 5-5/8" & 7-5/8" Storm Door Ready Mulls

Note: For the U-Shaped Cover to fit properly into the two dedicated jambs, legs will need to be cut down 15/16"

2-23/32" Extra Deep U-Shaped Cover is designed to create up to a 6-5/8" storm door ready mull for use within a 4-9/16" door unit assembly, as well as storm door ready mull (up to 8-5/8") for use within a 6-9/16" door unit assembly.



2-23/32" x 1-9/16" U-Shaped Cover for:

- 6-5/8" Storm Door Ready Mull for use in a 4-9/16" door unit assembly
- 8-5/8" Storm Door Ready Mull for use in a 6-9/16" door unit assembly

Note: If you are removing less than 1/2" from a rippable jamb, the Extra Deep U-Shaped cover will be needed. U-Shaped covers are 3/16" thick, core will need to be cut down 3/16" less of desired mull width. For cover to fit properly, cut down the legs an equal distance to what was removed from the core.

*Textured Stainable Available Fall 2019

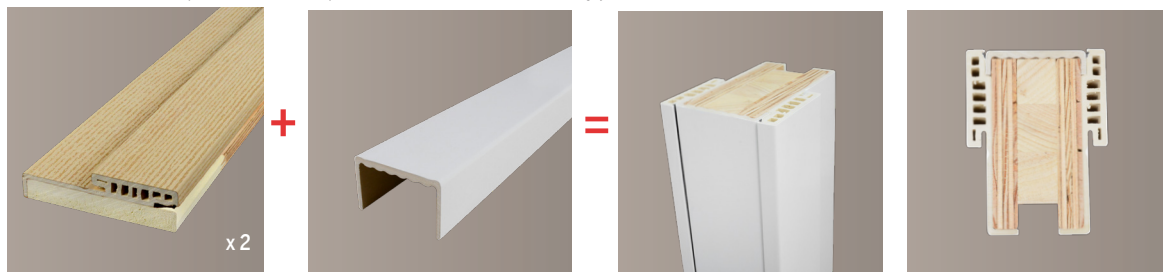
FrameSaver® FusionFrame®

Product Release Date: August 2019

MULLION OPTIONS & CAPABILITIES CONTINUED

1" Spread Mull Accessories & Capabilities

2-1/2" x 1-9/16" U-Shaped Cover for 1" spread mulls can be used with any jamb width.



DEDICATED 4-9/16" 1-PIECE JAMB
SHOWN IN TEXTURED STAINABLE

2-1/2" U-SHAPED COVER FOR
SPREAD MULLS SHOWN IN
SMOOTH WHITE*

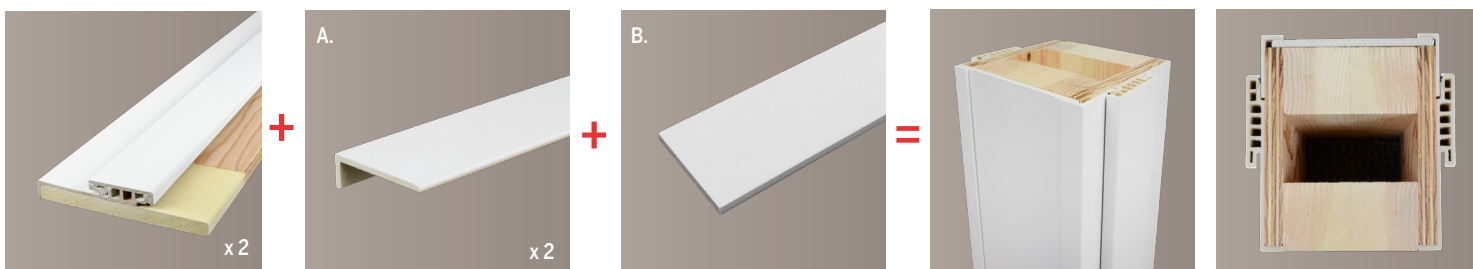
1" SPREAD MULL W/ 2-1/2" U-SHAPED COVER

2-1/2" x 1-9/16" U Shaped Cover for:

- 2-1/2" x 1-9/16" U-Shaped Cover for 1" spread mulls can be used with any jamb width.

>1" Spread Mull Accessories & Capabilities

L-Shaped mull cover receiver (A), exterior flat cover (B) are assembled in the shop with any FusionFrame width to create up to 4-1/4" spread mull.



4-9/16" x 2" 2-PIECE RIPPABLE
JAMB SHOWN IN SMOOTH WHITE

L-SHAPED MULL COVER RECEIVER
SHOWN IN SMOOTH WHITE

EXTERIOR FLAT COVER
SHOWN IN SMOOTH WHITE

4-1/4" SPREAD MULL W/ L-SHAPED MULL COVER (x2) &
EXTERIOR FLAT COVER

L-Shaped Mull Cover & Exterior Flat Cover

- 3/4" x 2-15/32" L-Shaped Mull Cover Receiver
- 3/16" x 5-1/2" Exterior Flat Cover

Mull Extender Accessories & Capabilities for Storm-Door-Ready Mulls

Mull extender (A) and mull attachment (B) piece can be applied to any standard mull, extending the mull up to 2-1/8" providing needed rigidity for storm door applications.



MULL EXTENDER
SHOWN IN SMOOTH WHITE*

MULL EXTENDER ATTACHMENT

4-3/8" FAT BOY MULL + EXTENDER

Mull Extender & Attachment

- 1-1/2" x 2-1/8" Mull Extender*
- 1" x 13/32" Mull Extender Attachment

*Textured Stainable Available Fall 2019

*can be cut down

FrameSaver® FusionFrame®

Product Release Date: August 2019

ADDITIONAL FUSIONFRAME OPTIONS AND ACCESSORIES

One-Piece Brickmould Miter Alignment Key

Supports alignment of the one-piece brickmould, ensuring a cohesive appearance without sacrificing brickmould adjustability.



MITER ALIGNMENT KEY



MITER ALIGNMENT KEY INSTALLED

Shipping Clip for 2-Piece Jambs

Keeps Removable Jamb Stop Cover in place during transit and allows for easier removal in the field. Available for two-piece design only.



SHIPPING CLIP



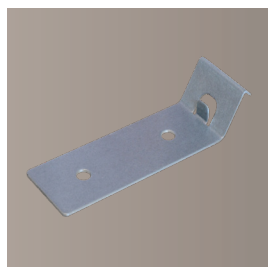
SHIPPING CLIP, INSTALLED

Shipping Clip Sizes Available:

- 4-9/16" & 6-9/16"

Outswing Conversion Bracket

Retention bracket secures brickmould in place for outswing conversions. **All dedicated jambs** can be converted to outswing units.



OUTSWING CONVERSION BRACKET



OUTSWING CONVERSION BRACKET,
INSTALLED



OUTSWING CONVERSION BRACKET,
INSTALLED, WITH BRICKMOULD

Thank you for your ongoing partnership. If you have any questions or concerns regarding any item covered in this release, or would like to discuss these additions in greater detail, please do not hesitate to contact your Endura Sales Representative or Territory Sales Manager.